

# Nice Wingo2024Kit

24V

For swing gates  
with leaves up to 2 m,  
surface mounted.  
Electromechanical gear motor  
24 Vdc.

Gear motor characteristics:

- reliable and silent: thanks to the patented layout of the internal components and less moving parts
- easy to install: after the gear motor has been assembled, all electrical connections are made from above
- user-friendly release with personalised Nice key or standard lock (optional)
- pre-assembled, travel stops PLA13 in opening

New control unit MC424:

- easy programming by pressing a single button
- clutch with anti-crush safety feature
- automatic memorization of limit switches in opening and closing with self-learning function
- pause time programming; partial opening; slowdown during opening and closing

sophisticated electronics: slowdown, obstacle detection system, can be linked to the 8,2 KOhm resistive sensitive edge.

no blackout: continues to work even during power failures using optional (PS124) batteries that fit inside the control unit.

The kit contains:



WG2024  
2 surface-mounted  
electromechanical gear  
motors, with Nice  
key release



FLO2R-S  
2 transmitters  
433.92 MHz,  
2 channels



MC424  
1 control unit MC424  
with plug-in receiver SMXI



FK  
1 pair of photocells  
for outdoor use



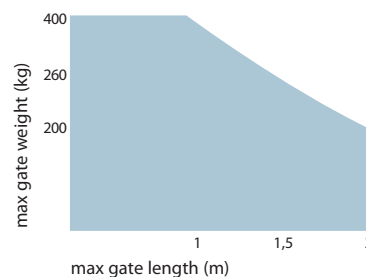
PLA13  
travel stops for closing  
and opening

Code	Description
WINGO2024KCE	Kit for swing gates with leaves up to 2 m, surface mounted.

N.B. The content of the package may vary: consult the retailer

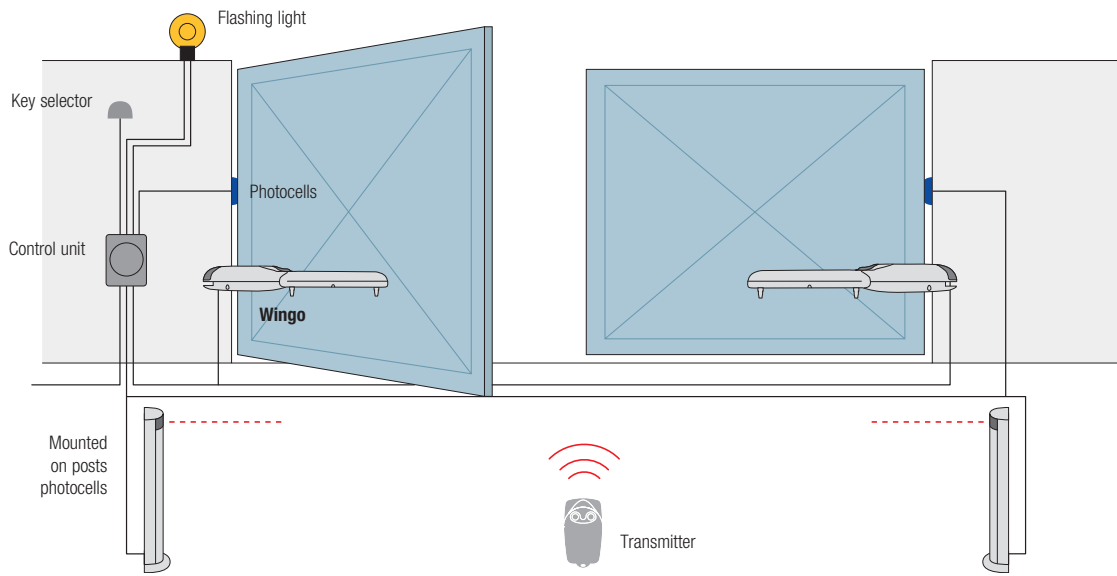
Technical specifications		WG2024
Electrical specifications		
Power	(Vdc)	24
Current absorbed (line)	(A)	3.5
Power absorbed	(W)	75
Incorporated capacitor	(µF)	-
Performance		
Speed	(m/s)	0.018
Torque	(N)	1500
Work cycle	(cycles/hour)	30
Dimensions		
Working temp.	(C°)	-20 ÷ +50
Protection level	(IP)	44
Dimensions	(mm)	98x95x770
Weight	(kg)	17

Utilisation limits:



For updated and complete information, consult the product technical manual.

# Nice Wingo2024Kit



## Accessories



**PLA13**  
travel stops for closing  
and opening manoeuvres

Pc/Pack. 4



**PLA14**  
screw-adjustable  
rear bracket

Pc/Pack. 2



**PLA15**  
screw-adjustable  
front bracket

Pc/Pack. 2



**CM-B**  
lock with two metal keys  
compatible with SELE



**PS124**  
24V battery with  
built-in battery charger

Pc/Pack. 1



Approximate draft

The information shown in this publication is purely indicative. Nice reserves the right to make any modifications to the products as it sees fit.